

The Gem Series

LUXURY JEWELRY SAFES DESIGN GUIDE



BROWN SAFE

The Gem Series

LUXURY JEWELRY SAFES DESIGNED TO DELIGHT. The Gem Series is the most convenient and secure jewelry storage solution for those seeking only the very best of the best. Superior engineering and meticulous craftsmanship combine to offer a safe you can depend on and be proud to display.

We cater to those who demand the highest in quality, security, and long-term reliability.

Given Brown Safe's 35 year history as the leading US manufacturer of high-security safes, and our worldwide reputation for handcrafted quality, a Gem jewelry safe is the ideal solution for organizing and protecting your jewelry collection and valuables.

This design guide will assist you in creating the perfect jewelry safe to meet your individual needs and reflect your personal style.

As you go through this design booklet, you will be given different options and choices for your new safe. Simply check the boxes to make your selections and create your custom Gem Jewelry Safe. For further information and specifications you can also review the material on our website at BrownSafe.com.

Need help selecting the right safe? View our complete [Safe Buying Guide](#).

Our knowledgeable and friendly designers are here to help if you have any questions.

(760) 233-2293

Sales@BrownSafe.com

Select Model Size:

Mini Gem 1418

Gem 2418

Gem 4018

Gem 6018

Gem 6037

Custom Size

Enter exterior dimensions
(in inches) below:

Height:

Width:

Depth:

The Gem Series is available in four standard model sizes.

The size of the internal space remains the same on the standard models, regardless of the protection level, but the external dimensions will increase based on the protection level selected.

Custom sizes are also available if one of the standard models doesn't fit your needs.



Mini Gem

Interior Dimensions:
14"H x 18"W x 11½"D

Three Drawers
4" Open Space



2418

Interior Dimensions:
24"H x 18"W x 15½"D

Seven Drawers
No Open Space



4018

Interior Dimensions:
40"H x 18"W x 15½"D

Seven Drawers
19" Open Space



6018

Interior Dimensions:
60"H x 18"W x 15½"D

Fourteen Drawers
18" Open Space



6037

Interior Dimensions:
60"H x 37"W x 15½"D

Fourteen Drawers (Per side)
18" Open Space (Per side)

**Exterior dimensions and weight will vary based upon the selected protection level.*

For further information and spec sheets in PDF format, please reference the individual model at www.BrownSafe.com.

Select Protection Level:

Gem

SuperGem

*Not available with Mini Gem

UltraGem

*Not available with Mini Gem

EliteGem

Gem Protection Level

- ½" thick solid steel door
- ¼" thick solid steel body
- Ball Bearing hard plate
- Pry resistant jamb with solid steel continuous locking bar on hinge side
- 1" hardened solid steel chrome locking bolts with anti-drive resistance
- Active and passive relocking devices
- U.L. approved Type 1 high security lock

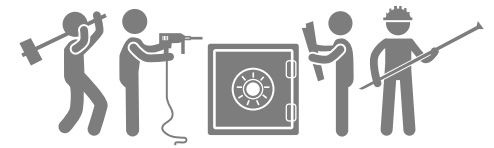
UL TL-15 Available



SuperGem Protection Level

- 1" thick solid steel door
- ½" thick solid steel body
- Chip carbide hard plate
- Pry resistant jamb with solid steel continuous locking bar on hinge side
- 1" hardened solid steel chrome locking bolts with anti-drive resistance
- Active and passive relocking devices
- U.L. approved Type 1 high security lock

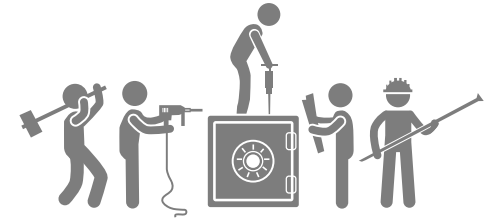
UL TL-30 Available



UltraGem Protection Level

- 1 ½" thick solid steel door
- 1" thick solid steel body
- Chip carbide hard plate
- Pry resistant jamb with solid steel continuous locking bar on hinge side
- 1" hardened solid steel chrome locking bolts with anti-drive resistance
- Active and passive relocking devices
- U.L. approved Type 1 high security lock

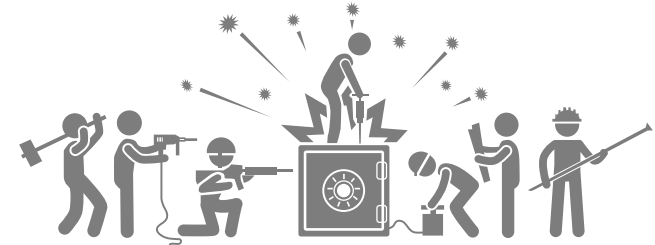
Exceeds UL TL-30



EliteGem Protection Level*

- ½" Military-grade ballistic armor plate door
- ¼" Military-grade ballistic armor plate body
- Chip carbide hard plate
- Glass plate relocking device
- Three-way boltwork
- Pry resistant jamb with solid steel continuous locking bar on hinge side
- 1" hardened solid steel chrome locking bolts with anti-drive resistance
- Active and passive relocking devices
- U.L. approved Type 1 high security lock
- Ultrasuede Fabric upgrade
- Choice of drawer pulls
- Interior LED lighting

Exceeds UL TL-30



**This unit uses military grade ballistic armor plate for added burglary protection. This creates an extremely strong safe without increasing weight (great for upstairs applications).*

Select Fire Protection:

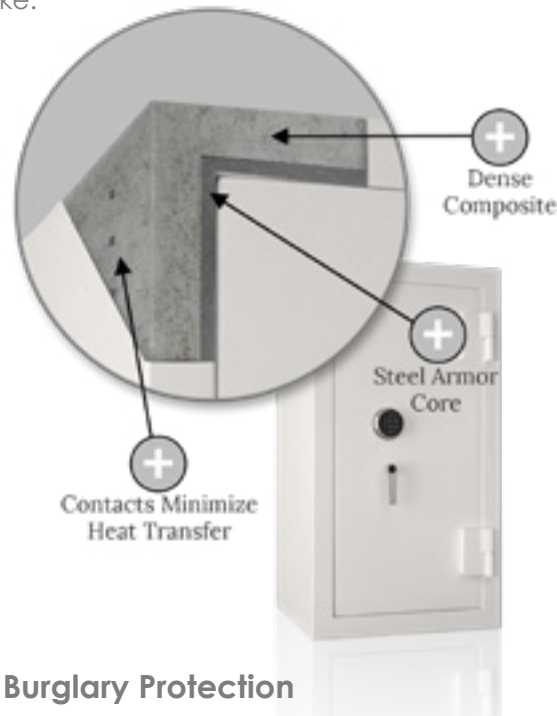
Yes

No

Superior Fire Protection

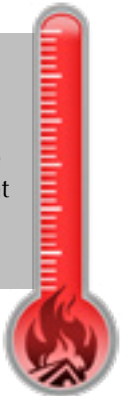
Selecting fire protection adds an innovative fire-resisting concrete amalgamate which protects the Gem Series safe from temperatures up to 1700°F for 90 minutes.

Once the safe is built to the desired protection level, the dense composite amalgamate is poured around the entire steel core of the safe. Once hardened, 2½" of solid composite material encases the entire body of the safe and 2" of solid amalgamate fills the door. An intumescent door seal protects the contents of the safe by expanding and filling any openings to block the movement of flames and retard the transfer of heat and smoke.



1700° F for 90 min.

Brown Safe's innovative fire proofing process has been tested and proven to keep contents from reaching flash point for at least an hour and a half at 1700 degrees Fahrenheit.



Added Burglary Protection

Not only does our proprietary composite material provide the greatest ability to protect from fire, the dense composition of this outer amalgamate cladding greatly adds to the safe's already substantial burglary protection.

Adding fire protection to the Gem Protection Level increases the safe's protection level to a rating of UL TL-15, and a SuperGem protection level to a rating of TL-30.

Select Lock Type:

Dial Lock

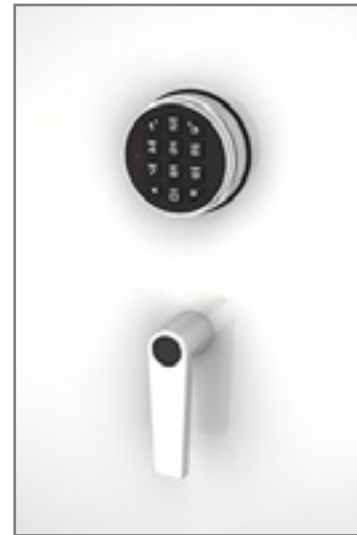
Electronic Lock (Standard)

Biometric Lock (Optional Upgrade)

We offer three available lock types for you to tailor your preferred method of access to your valuables:



Dial Lock



Electronic Lock



Biometric Lock

Mechanical Dial Lock

The ideal lock for the traditionalist. Its beauty is only surpassed by its simplicity. Untouched by time, this dial will turn with the same effortless fluidity in one hundred years.

Electronic Keypad Lock

The keypad is our most popular lock due to its simplicity and ease of use. This industrial grade lock comes from La Gard, one of the most reputable lock makers in the industry. The model we use has proven it's worth over many years of both commercial and residential service.

Biometric Fingerprint-Reading Lock

The ultimate in security and ease of use. No compromising combinations to remember, simply touch and open. It comes embedded in a highly ruggedized casing with matching handle machined from solid aerospace grade aluminum. This industrial grade casing provides increased outer lock protection while the top nested ergonomic position of the biometric fingerprint reader allows for effortless access.

Select Hinge Location:

Left-Hand Hinge

Hinges on left side when facing safe.

Right-Hand Hinge

Hinges on right side when facing safe.

The Gem Series safes come standard with a right-swing door. This means that if you are standing in front of the safe facing the door of the safe, the hinges will be located on the right side of the safe.

However, any of the Gem Series safes can be ordered with an optional left-swing door at no additional charge. This means that if you are standing in front of the safe facing the door of the safe, the hinges will be located on the left side of the safe.



Left-Hand Hinge



Right-Hand Hinge

Select Door Swing:

Standard:

135° Door Swing

Safe door must open to a minimum 135 degrees to pull drawers out of safe.

If you cannot get the door to 135 degrees, please select the 90 degree option.

Optional:

90° Door Swing

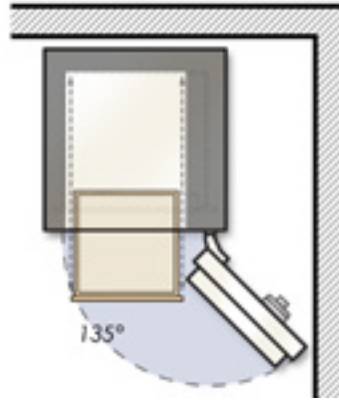
Safe door only needs to open to 90 degrees to pull out drawers.

Width of drawers reduced to clear safe door at 90 degrees.

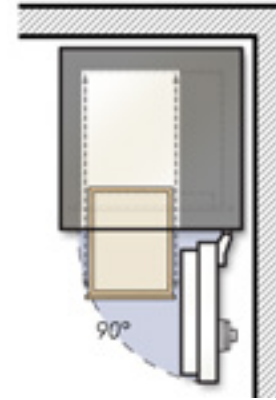
Select this option if there is any concern with getting the door to the full 135 degree clearance.

Please Note:
Both options will allow for the door to open up to 180 degrees if space permits.

The Gem Jewelry Safe is available with either 90° or 135° door clearance. When space is limited or when the safe is located in such a way that the door can't open a full 135° to fully extend the jewelry drawers, then a 90° door configuration should be selected. The 90° door swing option reduces drawer width so they can be fully extended when the door is open to a minimum of 90°.



135° Door Swing



90° Door Swing

**Note: Both door swing options will allow the door to open as far as space will permit up to 180°*



135° Door Swing



90° Door Swing



90° Door Swing
with fire protection

Models with fire protection require additional clearance. The resulting open space on the hinge side is lined in matching fabric and receives adjustable shelves.

Select Exterior Color:

Pure White

Antique White

Sierra Tan

Regal Red

Windsor Blue

Espresso Brown

Coach Black

Custom Color

Manufacturer:

Paint Code/Name:

Sheen:

**Gloss sheen recommended*

All Gem Luxury Jewelry Safes undergo a multi-stage paint process to provide the most refined exterior finish available, resulting in a hardened paint finish which is then polished to a high gloss.

Below are samples of our standard paint colors:



Need a Custom Paint Finish?

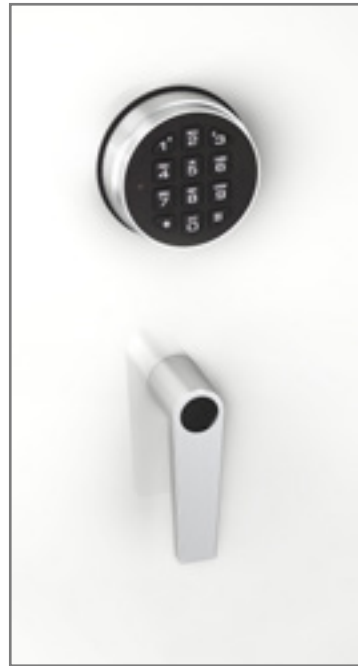
Our in-house painting specialists can also color match. Simply provide a sample, and we'll match the safe's paint to the desired color.

Lock & Handle Finish:

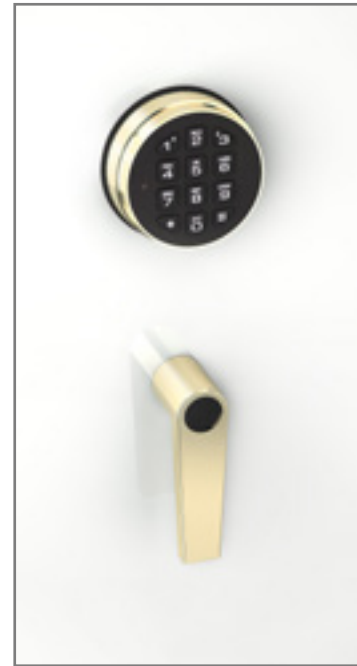
Brushed Stainless
(Standard)

Brushed Brass
(Standard)

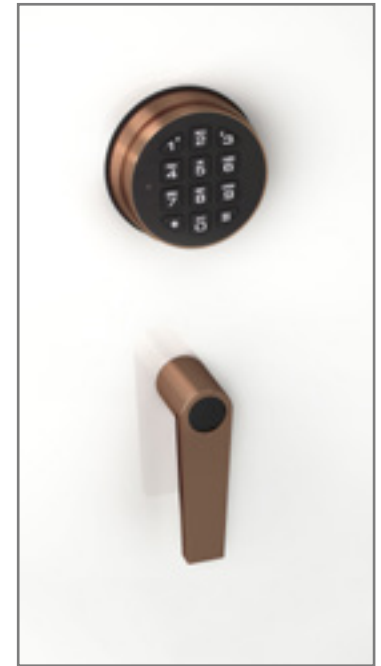
Oil-Rubbed Bronze
(Optional Upgrade)



Brushed Stainless



Brushed Brass



Oil-Rubbed Bronze

Finishes are shown here with the standard electronic lock and handle, but each is available with all lock types and handle options.

Select Interior Finish:

Hardwood Trim (Standard):

Bubinga

Curly Maple

Birdseye Maple

Zebrawood

Honduran Mahogany

Wenge

Mappa Burl

Walnut

Custom Wood Finish

Name of wood:

Signature Leather Pkg. (Optional):

Cream Leather

Gray Leather

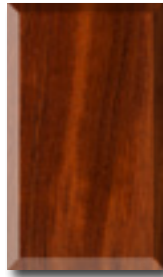
Custom Leather Color

Color desired:

**May be an additional charge*

The jewelry drawers, necklace rack, and interior trim of all Gem Luxury Jewelry Safes are custom-built using our hand-selected stock of hardwoods or wrapped in your choice of full-grain leather.

Available Hardwoods (Standard)



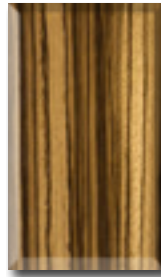
Bubinga



Curly
Maple



Birdseye
Maple



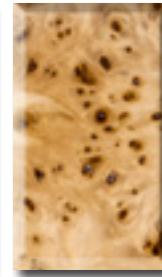
Zebrawood



Honduran
Mahogany



Wenge

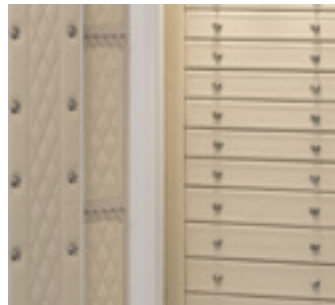


Mappa
Burl



Walnut

Signature Leather Package (Optional Upgrade)



Cream Leather



Gray Leather

Want a Custom Interior Finish?

*Custom wood finishes and leather options are available upon request.
We can also fabricate drawers from client-supplied wood stock.*

Select Drawer Pulls:

Standard:

Half Moon Pulls

Optional Upgrade:

Knob Pulls:

Brass Finish

Knob Pulls:

Stainless Finish

Knob Pulls:

Oil-Rubbed Bronze

Stadium Pulls:

Brass Finish

Stadium Pulls:

Stainless Finish

Stadium Pulls:

Oil-Rubbed Bronze

Half Moon Pulls



Brass



Stainless



Oil-Rubbed Bronze

Knob Pulls



Brass



Stainless

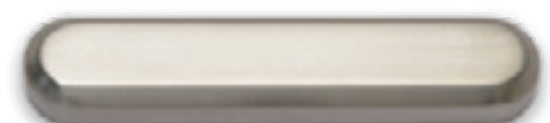


Oil-Rubbed Bronze

Stadium Pulls



Brass



Stainless



Oil-Rubbed Bronze

Images shown for reference only. Not to scale.



Select Interior Fabric:

Standard:

Black Velvet

Optional Upgrade:

Ivory Velvet

Black Ultrasuede®

Sand Ultrasuede®

Gray Ultrasuede®

**Custom Ultrasuede®
Color**

Name of color:

The interior walls, shelving, and drawer inserts of every Gem Series jewelry safe are lined in your choice of luxurious fabrics. Select from lush black or ivory velvet , or the popular Ultrasuede® options in black, sand or a host of custom color options.

Standard Fabric:

Upgraded Fabrics (Included on Elite Models):



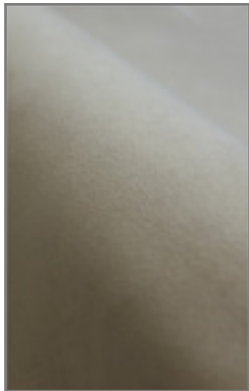
Black
Velvet



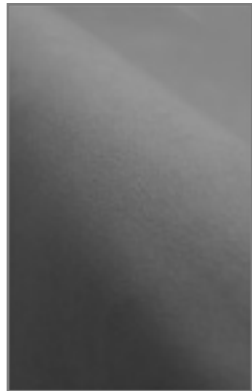
Ivory
Velvet



Black
Ultrasuede®



Sand
Ultrasuede®



Gray
Ultrasuede®

Jewelry Chest Location:

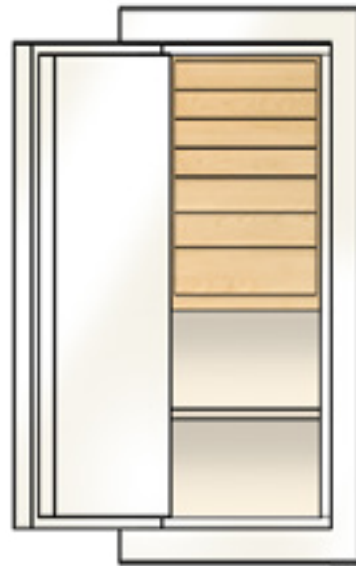
Top

Center

Bottom

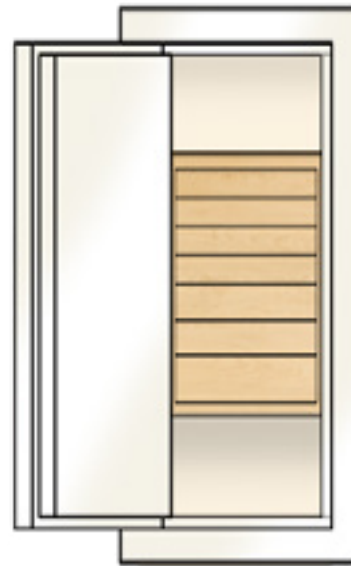
**Not applicable for Mini Gem or
Gem 2418 models*

The 4018, 6018, and 6037 models can be configured with jewelry chest located at the top, center, or bottom of the safe.



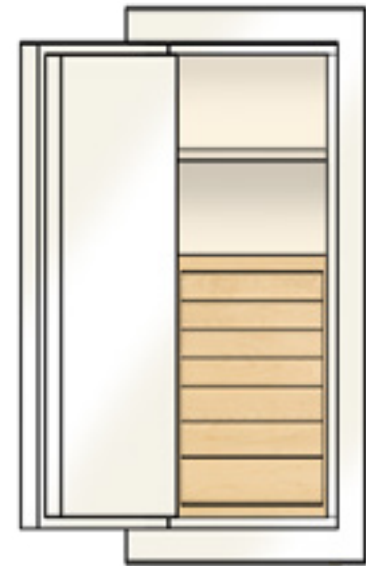
Top

Jewelry drawers located
at the top of the safe.
Open space at the bottom
with one adjustable shelf.



Center

Jewelry drawers located
in the middle of the safe.
Open space at the top
and bottom.



Bottom

Jewelry drawers located
at the bottom of the safe.
Open space at the top
with one adjustable shelf.

4018 model shown for reference

Select Drawer Layouts:

MiniGem

2418 & 4018

1 ½" Drawer:	1 ½" Drawer:
1 ½" Drawer:	1 ½" Drawer:
2" Drawer:	1 ½" Drawer:
	1 ½" Drawer:
	2" Drawer:
	2" Drawer:
	3" Drawer:

Or

Gem 6018 & 6037*

1 ½" Drawer:	1 ½" Drawer:
1 ½" Drawer:	1 ½" Drawer:
1 ½" Drawer:	1 ½" Drawer:
1 ½" Drawer:	1 ½" Drawer:
1 ½" Drawer:	1 ½" Drawer:
1 ½" Drawer:	1 ½" Drawer:
1 ½" Drawer:	1 ½" Drawer:
2" Drawer:	2" Drawer:
2" Drawer:	2" Drawer:
2" Drawer:	2" Drawer:
2" Drawer:	2" Drawer:
3" Drawer:	3" Drawer:
3" Drawer:	3" Drawer:

6018

6037

*Use only left for 6018 and use both sides for 6037.

Layout A
Large Compartments



Compartment Size: 2 1/4" x 3"
Cost = \$75

Layout B
Small Compartments



Compartment Size: 1 3/4" x 2 1/4"
Cost = \$75

Layout C
Ring Slots



Storage For 100 Rings
Cost = \$75

Layout D
Grooved Jewelry Holders



Great For Pins, Rings & Earrings
Cost = \$75

Layout E
Grooved Jewelry Holders
& Ring Slots



Combination Jewelry
& Ring Layout
Cost = \$75

Layout F
Grooved Jewelry Holders
& Open Compartment



Combination Jewelry
& Open Layout
Cost = \$75

Layout G
Four Compartments



Compartment Size:
6 1/8" x 6 1/4"
Cost = \$75

Layout H
Horizontal Dividers



Bracelets, Watches and Chains
Cost = \$75

Layout I
Watch Compartments



Watch and Bracelet Slots
With Pillows
Cost = \$135

Layout J
Flat Watch Drawer



Flat Storage For Watches
Five 2 1/4" x 12 3/4" Compartments
Cost = \$75

Layout K
Pen Drawer



Storage For Up To 20 Pens
Cost = \$75

Layout L
Man Drawer



Half Pen Storage and Half Storage
For Watches & Jewelry
Cost = \$75

Layout M
Currency Drawer



Compartments For Passport
& Cash Storage
Cost = \$75

Layout N
Travel Drawer



Compartments For Passports
& Travel Documents
Cost = \$75

Layout O
Jewelry Layout
With Necklace Form



Perfect Storage Option For
Matching Jewelry Sets
Cost = \$105

Layout P
Jewelry Drawer 1



Grooved Jewelry Holder, 2 1/4" x 2"
Compartments, & Horizontal Dividers
Cost = \$75

Layout Q
Jewelry Drawer 2



Ten 2 1/4" x 1 3/4", Three 4" x 1 3/4"
Compartments, & Horizontal Dividers
Cost = \$75

Layout R
Jewelry Drawer 3



Six 2 1/2" x 3" & Four 4" x 6 1/4"
Jewelry Compartments
Cost = \$75

Add Watch Winders:

Select Winder Configuration:

Watch Winder Panel

Watch Winder Drawer

— **Number of winders
desired**

Select Winder Type:

Rotorwind

Programmable

Orbita® Watch Winders

Adding watch winders to a Gem Series safe will provide you with the convenience of keeping all of your automatic watches wound and ready for use.

Two Available Configurations:

Watch Winder Panel:

- Our most popular watch winder option.
- Displays watches on an elegant panel for easy access.
- Configured with four Orbita winders per row.
- Available with any desired drawer configuration.
- Watch winders are AC-powered. Electrical cord exits back of safe on hinge side and fits standard household outlets.

Watch Winder Drawer:

- Our discreet storage option with watches tucked away in a 5" drawer.
- Up to six Orbita winders will fit in one 5" drawer with 135 degree door clearance.
- Up to four Orbita winders will fit in one 5" drawer with 90 degree door clearance.
- Comes standard with programmable winders.
- Watch winders are battery-powered.



Watch Winder Panel



Watch Winder Drawer

Two Available Winder Types:

Rotorwind Winders:

This design is unique in that it swings an automatic watch, rather than rotating it, to mimic the natural action of the wrist. These are recommended for most clients because they work with the majority of automatic watches and are a great solution for those who do not want to program each winder individually.

Programmable Winders:

This classic design employs a sophisticated microprocessor control for winding cycles of 650, 800, 950, 1,300, or 1,600 turns per day, with a choice of clockwise, counter-clockwise or automatic reversing rotation. These are recommended for watches with complex movements or collectors who desire more control over the winding parameters.

Select Luxury Upgrades:

Interior Lights

(Standard on EliteGem Models)

Three-Spoke Handle

Door-Mounted Necklace Rack

Door-Mounted Mirror

Pedestal Riser

Desired height in inches:

Interior Lights

- Low-profile LED lights cast a soft, neutral illumination, enhancing the natural beauty of the hardwood drawers and trim while establishing a vibrant luster for the jewels within.

Three-Spoke Handle

- Pleasing to both arms and eyes, the extra-long spoke knobs allow for effortless door operation from any position.
- Each handle is precisely machined and meticulously assembled by hand to our exacting specifications.
- To ensure a perfectly consistent finish, the handle and its paired lock undergo the plating and polishing process together.
- Offered in stainless, brass, or oil-rubbed bronze.

Door-Mounted Necklace Rack (Not available with 3 way boltwork)

- Exotic hardwood necklace rack mounted to inside of safe door (wood to match jewelry drawers).
- Several rows of color-matched pins mounted at an angle for secure necklace storage.

Door-Mounted Mirror

- Elegant mirror secured to the interior of the safe door provides instant, convenient feedback while trying on jewelry.

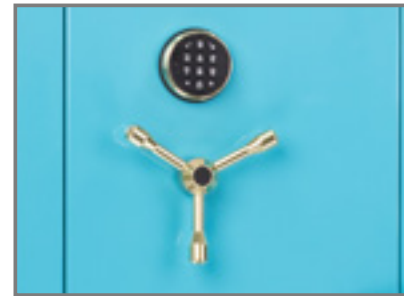
Pedestal Riser

- The pedestal riser elevates the safe to an optimum height for quick and easy access.
- Pedestal risers start at 3" tall and can be custom built to any height in half-inch increments.

Please Note: If considering a pedestal over 6" tall we highly recommend selecting the next size larger safe. Typically the price of a tall pedestal exceeds that of the next largest safe size, plus you gain the benefit of extra storage space to secure your valuables.



Interior Lights



Three-Spoke Handle



Gem Model 4018 shown with:
Door-mounted necklace rack, interior lights,
door-mounted mirror, and pedestal riser.

Select Security Upgrades:

Glass Plate Relocking Device

*Not available on Mini Gem

Silent Signal Alert

Bolt Lock Indicator

Multi-Sensor Alarm

(Combines Silent Signal Alert and Bolt Lock Indicator)

Concealment Cabinet

Glass Plate Relocking Device -Standard on EliteGem Models

- Provides added burglary protection.
- Increased sensitivity against forced-entry attacks.
- Glass plate shatters setting off relockers at an early stage in the burglary, increasing the difficulty of entry.



Silent Signal Alert

- Triggered by either a hidden button or an alternate unlock entry code, safes equipped with the silent signal alert feature interface directly with your alarm or home automation system.
- If the unfortunate situation ever arises where the safe owner is forced to open the safe against their will, the safe can be unlocked in a normal manner while an undetectable alert is secretly sent to the home monitoring system which in turn relays a message to immediately notify security authorities.



Bolt Lock Indicator

- Allows the home automation system to monitor all safe entries and notify the owner any time the safe is accessed, or raise an alert if the safe is opened while the owner is away from home.



Multi-Sensor Alarm

- Combines both the silent signal alert and bolt lock indicator security features into one advanced security upgrade.



Concealment Cabinet

- An ideal solution when housing your safe in accessible locations without drawing attention.
- Each cabinet can be outfitted with a standard lock, or a hidden magnetic lock for added secrecy.
- Offered in a variety of finishes and custom-built to match your existing decor.



The Gem Series

LUXURY JEWELRY SAFES



FIRST NAME:

LAST NAME:

EMAIL:

PHONE:

ADDRESS:

CITY:

STATE:

ZIP CODE:

COUNTRY:

Worldwide delivery and white glove installation is arranged using our trained and bonded personnel.

Call us today to discuss your specific delivery and installation requirements.

Please call our offices and ask for a sales representative to finalize your order.

Brown Safe Manufacturing, Inc.
1081 Poinsettia Ave.
Vista, CA 92081

Phone: 760-233-2293
Fax: 760-233-2297

Email: sales@BrownSafe.com
Website: www.BrownSafe.com