

Layout A

Large Compartments



Compartment Size: 2 1/4" x 3"
Cost = \$75

Layout B

Small Compartments



Compartment Size: 1 3/4" x 2 1/4"
Cost = \$75

Layout C

Ring Slots



Storage for 100 Rings
Cost = \$75

Layout D

Grooved Jewelry Holders



Great for Pins, Rings, & Earrings
Cost = \$75

Layout E

Grooved Jewelry Holders & Ring Slots



Combination Jewelry & Ring Layout
Cost = \$75

Layout F

Grooved Jewelry Holders & Open Compartment



Combination Jewelry & Open Layout
Cost = \$75

Layout G

Four Compartments



Compartment Size: 6 1/8" x 6 1/4"
Cost = \$75

Layout H

Horizontal Dividers



Great for Bracelets, Watches, & Chains
Cost = \$75

Layout I

Watch Compartments



Watch & Bracelet Slots with Pillows
Cost = \$135

*Recommended for 3" drawer min.

Standard Drawer Layout: Open tray with lining. Standard Interior Drawer Size: 12 3/4"W x 13"D (Front To Back)

- All insert layouts and dividers are made to 1.5" height for accessibility into small compartments and interchangeability in between drawers.
- Insert layout pricing is based on standard size jewelry safes with drawers 12.75" wide x 13" deep in black velvet fabric purchased with your Gem Jewelry safe.
- Pricing may vary on inserts purchased separately due to size, fabric type and configuration.

Layout J
Flat Watch Drawer



Flat Storage for Watches
Five 2 1/4" x 12 3/4" Compartments
Cost = \$75

Layout K
Pen Drawer



Storage for Up To 20 Pens
Cost = \$75

Layout L
Man Drawer



Half Pen Storage and Half Storage
for Watches & Jewelry
Cost = \$75

Layout M
Currency Drawer



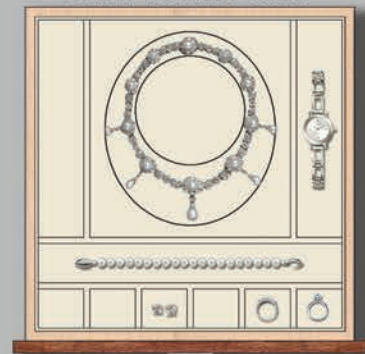
Compartments for Passport
& Cash Storage
Cost = \$75

Layout N
Travel Drawer



Compartments for Passports
& Travel Documents
Cost = \$75

Layout O
Jewelry Layout
With Necklace Form



Perfect Storage Option for
Matching Jewelry Sets
Cost = \$105
*Recommended for 2" drawer min.

Layout P
Jewelry Drawer 1



Grooved Jewelry Holder, 2 1/4" x 2"
Compartments, & Horizontal Dividers
Cost = \$75

Layout Q
Jewelry Drawer 2



Ten 2 1/4" x 1 3/4", Three 4" x 1 3/4"
Compartments, & Horizontal Dividers
Cost = \$75

Layout R
Jewelry Drawer 3



Six 2 1/2" x 3" & Four 4" x 6 1/4"
Jewelry Compartments
Cost = \$75

Standard Drawer Layout: Open tray with lining. Standard Interior Drawer Size: 12 3/4"W x 13"D (Front To Back)

- All insert layouts and dividers are made to 1.5" height for accessibility into small compartments and interchangeability in between drawers.
- Insert layout pricing is based on standard size jewelry safes with drawers 12.75" wide x 13" deep in black velvet fabric purchased with your Gem Jewelry safe.
- Pricing may vary on inserts purchased separately due to size, fabric type and configuration.